

Full HD
1080

Vision
ENGINEERING



Inspection and measurement in Full HD

Exceptional digital video inspection system designed for effortless image capture, documentation and measurement

- Inspect, magnify and measure, all in Full Definition with Makrolite
- HD 1080i video camera provides superb clarity
- Large field of view with 20:1 optical zoom
- Magnification from x1 to x150



FM 557119

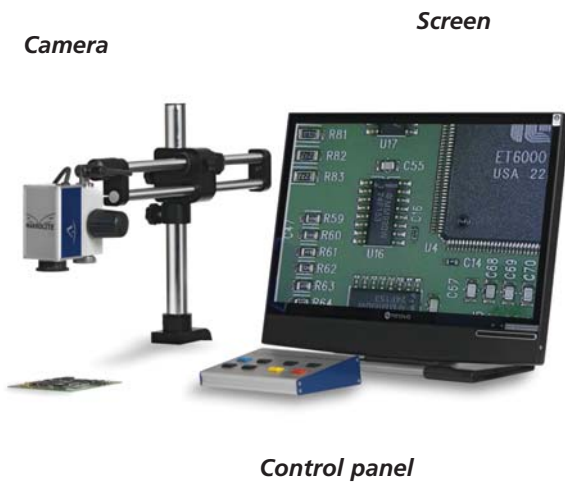
Vision Engineering Ltd has been certified for the quality management system ISO 9001:2008.

Makrolite - A video inspection system in Full HD available in two versions

Makrolite is a new digital inspection system from Vision Engineering. Whether you want to simply capture images, annotate, magnify or measure, Makrolite simplifies imaging tasks in a powerful full HD digital video system. Makrolite is available with PC-based software, utilising a full software suite of annotation, image capture and measurement tools, or as a camera-only system (with no PC), for applications where only high resolution imaging is required.

1

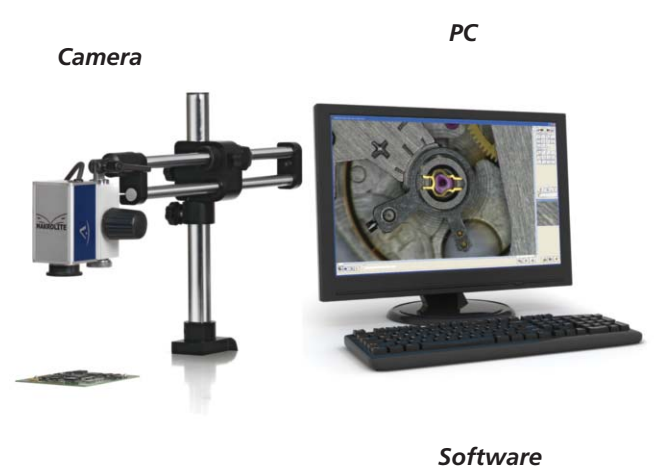
Visualisation on HD monitor



2

Visualisation on PC

+ software



For inspection applications only

For inspection, image capture, annotation and measurement applications

Why can Makrolite meet your needs ?

Makrolite is ideal for a very wide range of applications, including training, inspection or marketing.

- Inspection of components
- Quality control
- 2D measurement
- Training - can be used as a teaching aid to show defects on components etc.
- Marketing - capture HD images to give clarity and definition to any promotional material

Applications can be tailored using a range of magnifications, to support any business working in industry, including electronics, precision engineering, manufacturing or life sciences.



A powerful video inspection system to inspect in microscopic detail.



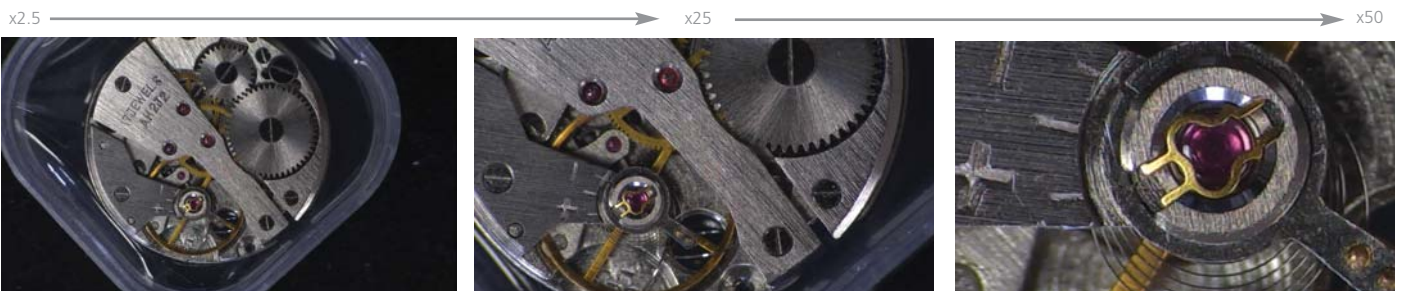
High definition image capture with effortless simplicity.

Being used as a simple camera, Makrolite's exceptionally large field of view allows you to view samples up to 205mm wide. View the full sample, then zoom in to high magnification for in microscopic detail.

The simple control panel allows you to adjust the camera settings to maximise the high definition image with ease, so even difficult to see features can be inspected with optimum clarity and contrast.

HD 1080i digital video camera, with motorised zoom (manual and autofocus), and 20:1 zoom ratio

- + Choice of stands to suit your requirements
- + Magnification range up to x150 (x2.5 to x50 standard)
- + Control Panel incorporating the camera controls
- + A neon tube or LED illumination
- + 22" HD monitor with HDMI input



With a large field of view, the Makrolite delivers a quality image either zoomed in for detailed inspection or zoomed out so all of the subject can be inspected simultaneously.

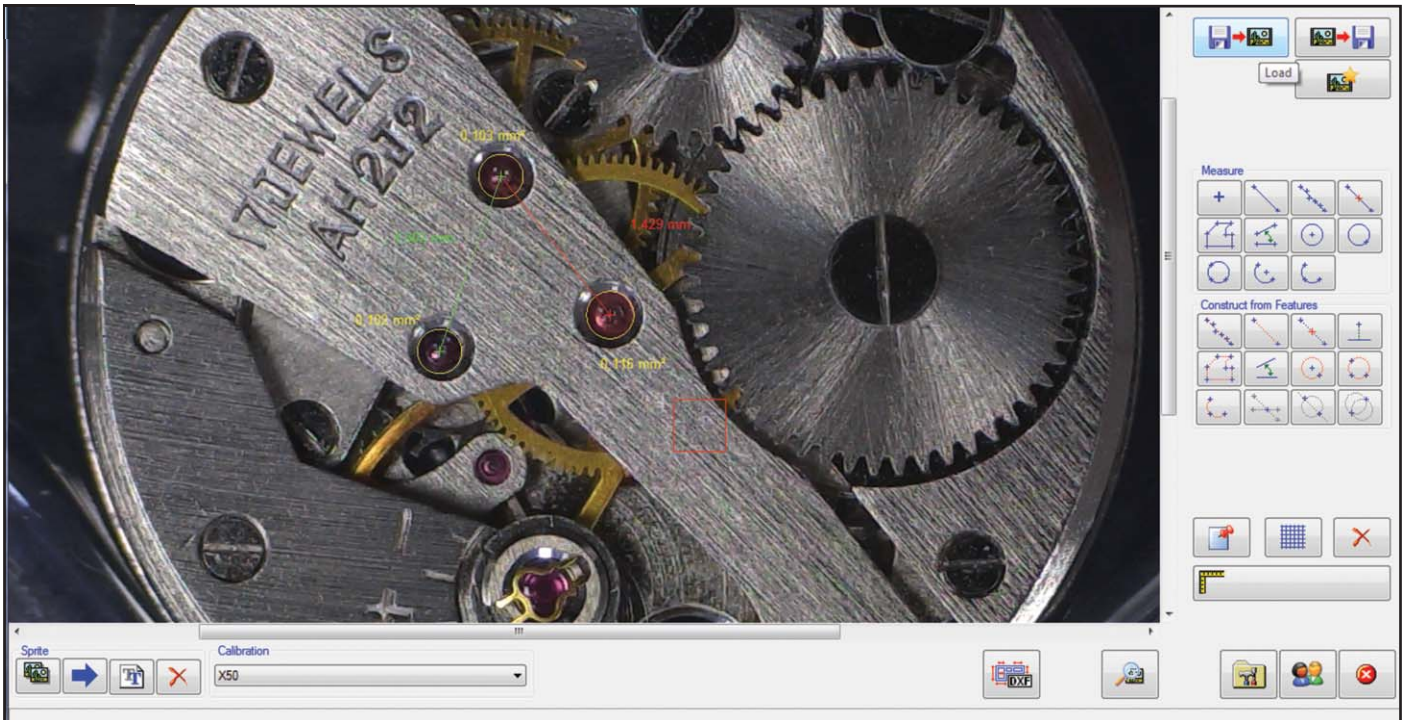
Camera control panel

- 20 :1 Zoom ratio, with a magnification from x1 to x150
- Autofocus or manual focus
- Unlimited memory presets to store settings and calibrations
- Automatically exports results to Excel (PC)
- Iris diaphragm and white balance control
- Settings for all camera parameters
- Optionally, import/export of DXF files (PC)



2

An easy to use **inspection, annotation and measurement** software !



Main functions

With the amazing quality of image, the software offers a wide range of inspection, annotation and measurement parameters and tools, including the facility of saving.

- Image capture in JPEG, BMP and TIFF formats
- Annotation tools, including markers and measurements
- CAD file importation which allows inspection with a CAD overlay
- Array of simple 2D measurement tools
- A number of special effects such as negative effect and mirror
- Report generation into Excel and other formats

All of these operations can simply be made by just using the mouse.

HD 1080i digital video camera, with motorised zoom (manual and autofocus), and 20:1 zoom ratio

- + Choice of stands to suit your requirements
- + Magnification range up to x150 (x2.5 to x50 standard)
- + Pci Express Full HD acquisition card*
- + A tube neon or LED illumination
- + PC software for camera control, image capture, annotation, measurement, etc.
- + Software protection key

**Can be supplied with or without PC and 22" HD monitor*



inspect with optimum clarity and contrast...



...with the option to annotate, measure, & export data to Excel for reporting.

Makrolite, a product designed for every need !

Console version

PC Software version

Boom Stand



Makrolite 1

- Boom stand and monitor
- Full HD camera with x20 motorised optical zoom
- Control panel with AC adaptor
- Objective magnification of x12 to x50 at 2.5*
- Choice of neon illumination or LED ringlight
- Color Display 22" Full HD with HDMI, HDMI Cable

Makrolite 4

- Boom stand with PC software
- Full HD camera with x20 motorised optical zoom
- Control panel with AC adaptor
- Full HD image capture card PCIeExpress
- Objective magnification of x12 to x50 at 2.5*
- Choice of neon illumination or LED ringlight
- Software protection key
- Control software capture and measurement

Double arm boom stand



Makrolite 2

- Double arm boom stand and monitor
- Full HD camera with x20 motorised optical zoom
- Control panel with AC adaptor
- Objective magnification of x12 to x50 at 2.5*
- Choice of neon illumination or LED ringlight
- Color Display 22" Full HD with HDMI, HDMI Cable

Makrolite 5

- Double arm boom stand with PC software
- Full HD camera with x20 motorised optical zoom
- Control panel with AC adaptor
- Full HD image capture card PCIeExpress
- Objective magnification of x12 to x50 at 2.5*
- Choice of neon illumination or LED ringlight
- Software protection key
- Control software capture and measurement

Articulated arm stand



Makrolite 3

- Articulated arm stand and monitor
- Full HD camera with x20 motorised optical zoom
- Control panel with AC adaptor
- Objective magnification of x12 to x50 at 2.5*
- Choice of neon illumination or LED ringlight
- Color Display 22" Full HD with HDMI, HDMI Cable

Makrolite 6

- Articulated arm stand and monitor with PC software
- Full HD camera with x20 motorised optical zoom
- Control panel with AC adaptor
- Full HD image capture card PCIeExpress
- Objective magnification of x12 to x50 at 2.5*
- Choice of neon illumination or LED ringlight
- Software protection key
- Control software capture and measurement

Bench stand



Makrolite 7

- Bench stand for additional stability and monitor
- Full HD camera with x20 motorised optical zoom
- Control panel with AC adaptor
- Objective magnification of x12 to x50 at 2.5*
- Incident and transmitted light illumination with LEDs
- Color Display 22" Full HD with HDMI, HDMI Cable

Makrolite 8

- Bench stand for additional stability with PC software
- Full HD camera with x20 motorised optical zoom
- Control panel with AC adaptor
- Full HD image capture card PCIeExpress
- Objective magnification of x12 to x50 at 2.5*
- Incident and transmitted light illumination with LEDs
- Software protection key
- Control software capture and measurement

*when using a x2.5 objective lens

Technical characteristics



- Specification :
- Magnification : x12 - x50
- Focus : Auto and manual
- Image sensor : Cmos, Exmor, 3.27 MP,
- Zoom : x20
- Signal / Output camera : HD1080p / 25fps, 720p / 60fps or lower
- Signal output controller : HDMI

- Power requirements :
- Power consumption :
- Funktionen controller : Zoom, focus
- Magnification chart :
- Working distance (with included lens DCR 250) : 95mm
- Field of view : 55mm to 5mm at magnification 10x to 100x



For more information visit www.visioneng.co.uk/makrolite



Vision Engineering manufacture a comprehensive range of ergonomic stereo microscopes as well as a complete line of optical and video non-contact measuring systems.

For more information...

Vision Engineering has a network of offices and technical distributors around the world. For more information, please contact your Vision Engineering branch, local authorised distributor, or visit our website.

Vision Engineering Ltd.
(Manufacturing)
Send Road, Send,
Woking, Surrey, GU23 7ER, England
Tel: +44 (0) 1483 248300
Email: generalinfo@visioneng.com

Vision Engineering Ltd.
(Commercial)
Monument House, Monument Way West,
Woking, Surrey, GU21 5EN, England
Tel: +44 (0) 1483 248300
Email: generalinfo@visioneng.com

Vision Engineering Inc.
(Manufacturing & Commercial)
570 Danbury Road, New Milford,
CT 06776 USA
Tel: +1 (860) 355 3776
Email: info@visioneng.com

Vision Engineering Inc.
(West Coast Commercial)
745 West Taft Avenue, Orange,
CA 92865 USA
Tel: +1 (714) 974 6966
Email: info@visioneng.com

Vision Engineering Ltd.
(Central Europe)
Anton-Pendele-Str. 3,
82275 Emmering, Deutschland
Tel: +49 (0) 8141 40167-0
Email: info@visioneng.de

Vision Engineering Ltd.
(France)
ZAC de la Tremblaie, Av. de la Tremblaie
91220 Le Plessis Paté, France
Tel: +33 (0) 160 76 60 00
Email: info@visioneng.fr

Vision Engineering Ltd.
(Italia)
Via Cesare Cantù, 9
20092 Cinisello Balsamo MI, Italia
Tel: +39 02 6129 3518
Email: info@visioneng.it

Vision Engineering
(Brasil)
Tel: +55 11 4063 2206
Email: info@visioneng.com.br

Nippon Vision Engineering
(Japan)
272-2 Saedo-cho, Tsuduki-ku,
Yokohama-shi, 224-0054, Japan
Tel: +81 (0) 45 935 1117
Email: info@visioneng.jp

Vision Engineering Ltd
(China)
11J, International Ocean Building,
720 Pudong Avenue, Shanghai,
200120, P.R. China
Tel: +86 (0) 21 5036 7556
Email: info@visioneng.com.cn

Vision Engineering
(S.E. Asia)
Tel: +603 80700908
Email: info@visioneng.asia

Vision Engineering
(India)
Email: info@visioneng.co.in

Distributor



Disclaimer – Vision Engineering Ltd. has a policy of continuous development and reserves the right to change or update, without notice, the design, materials or specification of any products, the information contained within this brochure/datasheet and to discontinue production or distribution of any of the products described.

Visit our multi-lingual website:

www.visioneng.com